



## Updating software for AK2 controllers

## Introduction

This document describes the procedure for updating of software in an AK2 controller.

The software number is indicated by three digits – e.g. 1.02.

- Changes of the last digit reflect small changes of the software. Here it would be advantageous to save the settings in the controller and again transfer them to the controller with the "Back-up" and "Restore" functions.
- Changes of the second-last digit reflect major changes that demand a total resetting of the controller.
- Changes of the first digit are normally not relevant.

There are two programmes for updating software. Which of the two programmes to be used for the current controller is determined on the next page.

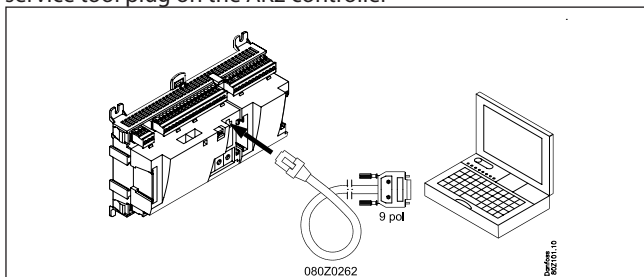
## Instruction in how to use the programming tool:

### 1. Items needed

Before starting the flash programming of the AK2 controller the following items are needed:

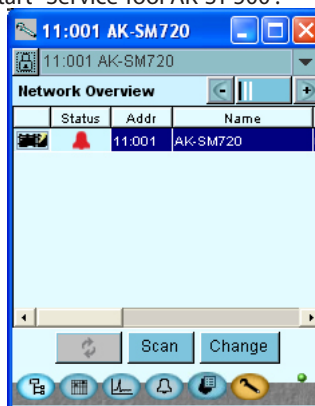
- A PC with an available COM port
- A PC to AK2 cable code. no. 080Z0262
- The AK2\_SAUT" programme
- The AKARM9App-programme (for System Manager)
- The latest new software for the controller, e.g. "080Z0121-serial-x\_xx.a37" for a case controller and System Manager (order number and x\_xx = software number)
- "080Z8511\_x\_xx.tgz" for a System Manager medio 2010 (order number and x\_xx = software number)
- For a "Back-up" the software "Service tool AK-ST 500" will also be required.

### 2. Connect the AK2 cable between the COM port of the PC and the service tool plug on the AK2 controller



### 3. Check which software is in the current controller.

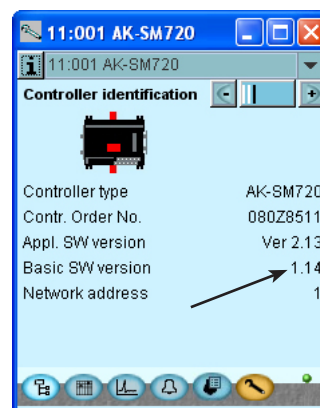
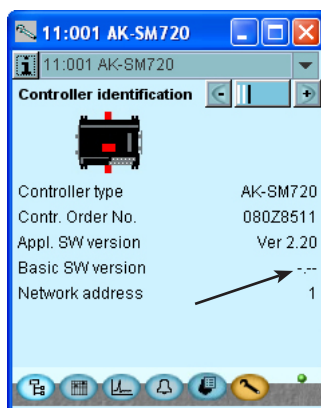
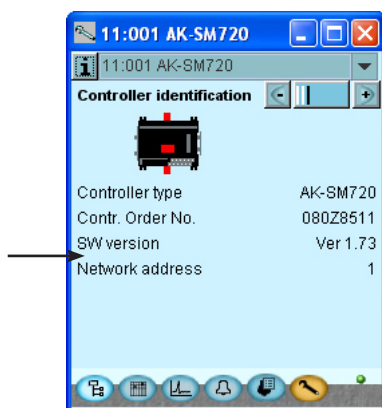
Start "Service Tool AK-ST 500".



Information on the software version is found via the access picture, and by proceeding to the right-most picture. Press the +/- key to get there.

Continue to the next page:

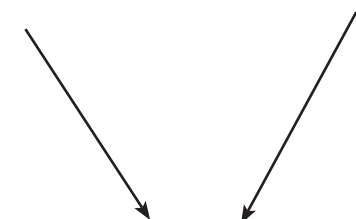
4. You will see one of the following pictures:  
 Note the difference in **the line** "Basic SW version"  
 Is the line there?  
 Are there lines instead of numbers?  
 Is there a number?



This picture can be found in:  
 Pack controllere  
 Case controllere  
 System Manager  
 Protocol Interface  
 m.m.

This picture can be found in:  
 System Manager  
 Protocol Interface

This picture can be found in:  
 System Manager  
 Protocol Interface



You must use the programme: **AK2\_SAUT**  
 and file type: **080Z8511-serial-x\_xx.a37**

**Continue to page 4.**

You must use the programme: **AKARM9App**  
 and file type: **080Z8511\_x\_xx.tgz**

**Continue to page 6.**

**Instruction in how to use the AK2\_SAUT-programming tool:**

**1. Back-up**

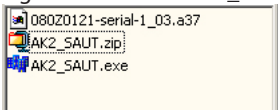
If the new software only contains changes of the third digit, the controller's settings can be saved on the PC. Start the Service tool programme and activate the "Back-up" function.

**2. Unzip the program**

Extract the AK2\_SAUT.zip file to the desktop

**3. Place the new software file on the desktop**

E.g. "080Z0121-serial-1\_03.a37"



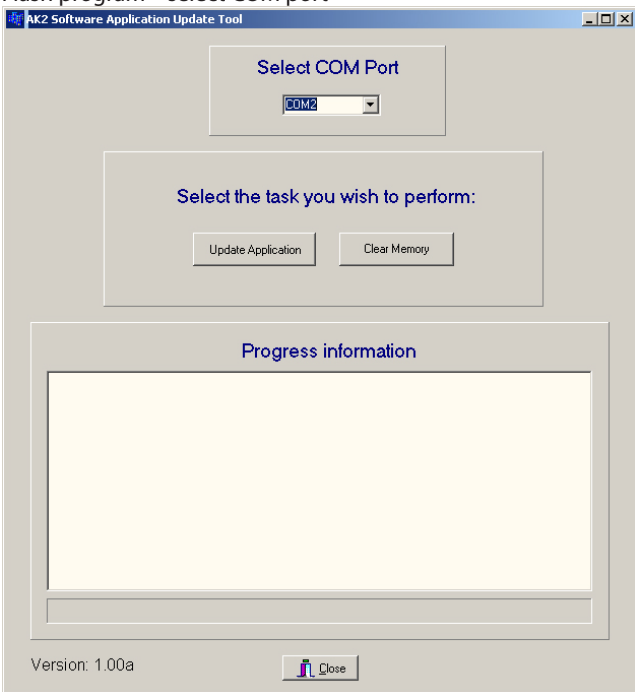
**4. Check the controller**

Before starting the flash program, please check that the Status LED on the front of the controller is flashing. Or there is power on the controller.

**5. Start the flash programming**

Now start the flash programming software "AK2\_SAUT.EXE"

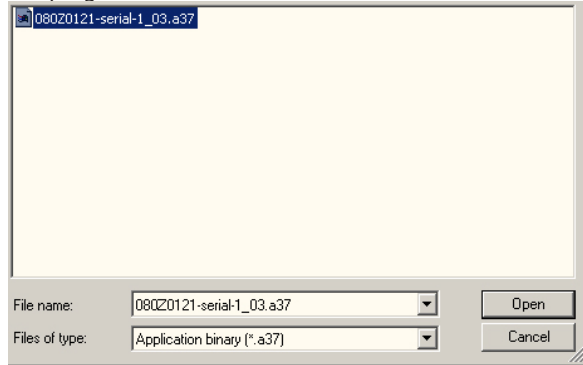
**6. Flash program – select COM port**



Just select the COM port via the drop down box.

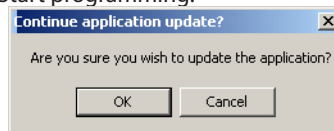
**7. Flash program - press "Update application"**

**8. Flash program - select the new software**



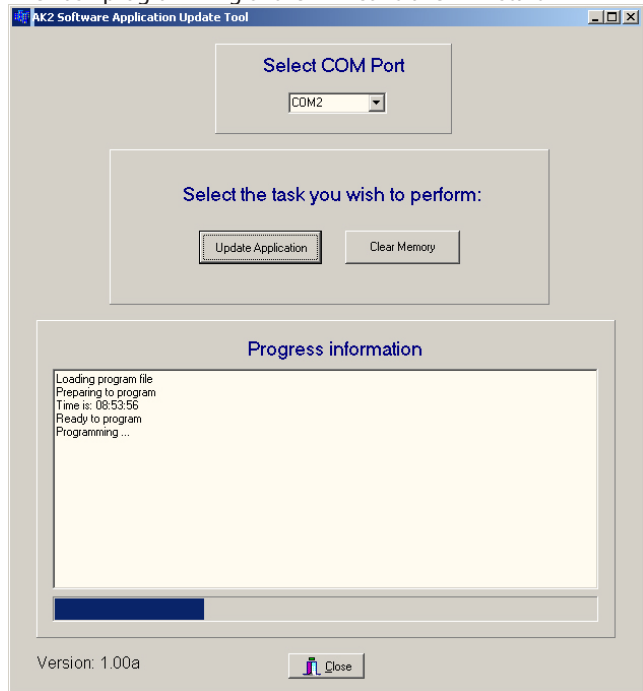
Select the new file (eg."080Z0121-serial-1\_03.a37"), which was placed on the desktop. Press "Open".

**9. Start programming:**



The question box "Are you sure you want to update the application?" will come up – press "OK"

The flash programming of the AK2 controller will start



The blue bar in the window will show the progress of the flash programming. While programming the service pin LED on the front of the AKC controller will flash.

10 REBOOT info:

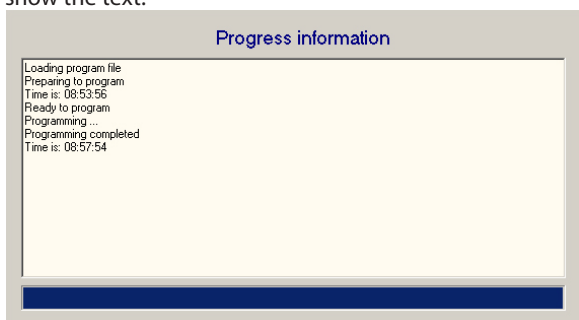
```

Loading program file
Failed to restart the controller!
Perhaps there is no application running - will try to program
    
```

If the following information appears while programming, disconnect the controller's power source and reconnect it. The programme will then "fall in" and continue the programming once the controller sends a ready message. This takes approximately 1½ minute, once the power has been reconnected.

11. End programming:

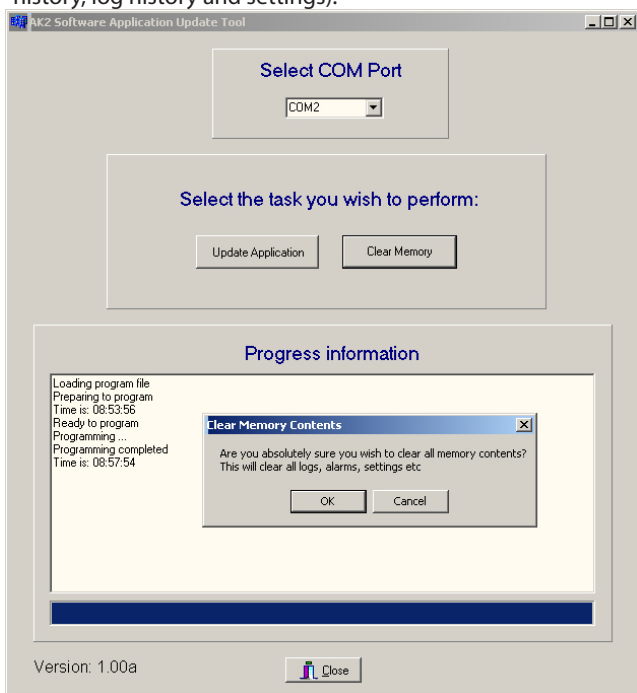
When the programming is finished the progress window will show the text:



**Wait until the Status LED on the front of the controller is flashing before going to the next point.**

12. Clear memory

When the status LED is flashing - press the "Clear memory" button. This will clear the memory of the controller (clearing alarm history, log history and settings).



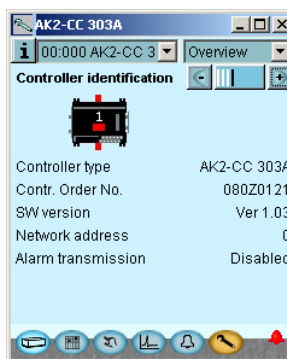
Press "OK".

13. Controller reboot

After 30 sec. the controller is going to make a reboot – wait until the Status LED starts flashing again – now the flash programming has finished.

14. Check software version of controller

Close down the flash programming software and start the service tool (remember to use the same COM port for the service tool software, so that you do not need to move the cable). Logon as "SUPV" and passcode "123". Press the left arrow on the temp. overview screen and you will navigate to the "controller identification" screen. Check the software version.



15. Restore

If you have saved the earlier settings via the Back-up function you can copy the settings back into the controller again. Use the Service tool function "Restore".

**Instruction in how to use the AKARM9App-programming tool:**

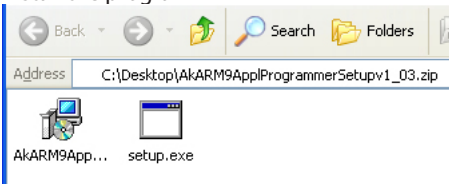
**1. Back-up**

If the new software only contains changes of the third digit, the controller's settings can be saved on the PC. Start the Service tool programme and activate the "Back-up" function.

**2. Unzip the program**

Extract the **AkARM9ApplProgrammerSetupv1\_03.zip** file to the desktop

**3. Install the program**

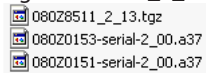


Start the program "Set up"

(The programme will be installed on "C": "Program files" / "ADAP-KOOL" / "AK ARM9 Application Programmer". There will be no shortcut.)

**4. Place the new software file on the desktop**

E.g. "080Z8511\_2\_13.tgz"

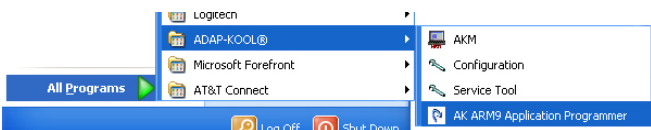


**5. Check the controller**

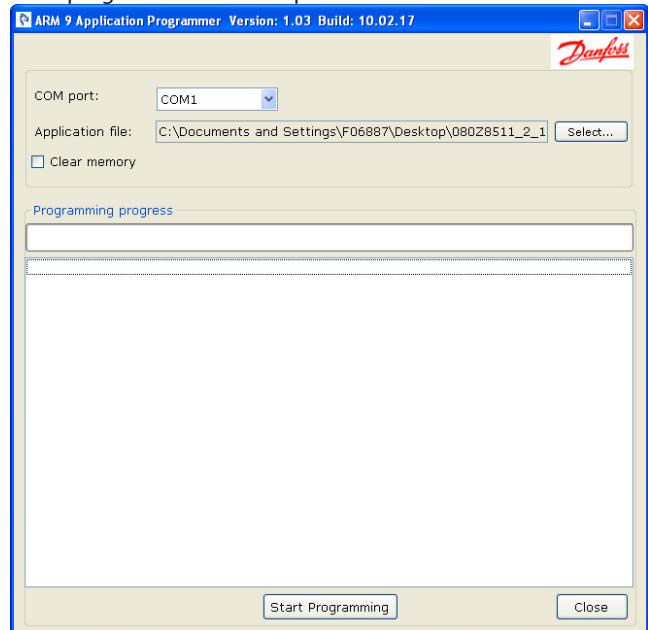
Before starting the flash program, please check that the Status LED on the front of the controller is flashing. Or there is power on the controller.

**6. Start the flash programming**

Now start the flash programming software "AK ARM9 Application Programmer"

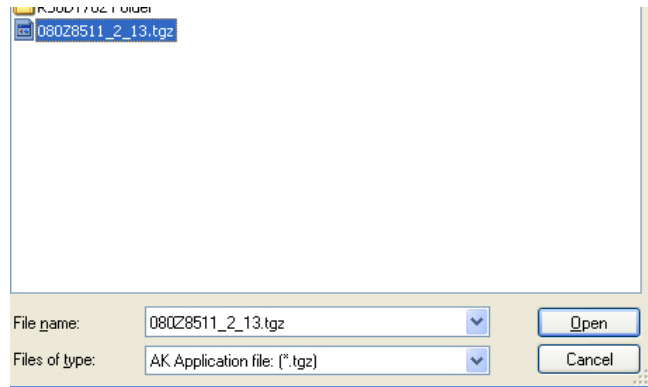


**7. Flash program – select COM port**



Just select the COM port via the drop down box.

**8. Flash program - select the new software**



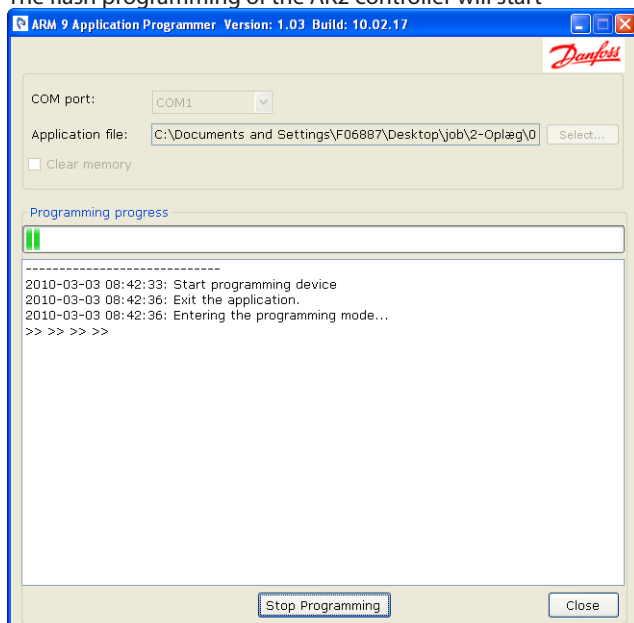
Select the new file (eg "080Z8511\_2\_13.tgz"), which was placed on the desktop. Press "Open".

**9. Should the current settings in the AK2 controller be kept, or should they be erased and reinstalled later on?**

Mark the "Clear memory" field if they should be erased.

10. Start programming:  
Press "Start Programming"

The flash programming of the AK2 controller will start



The bar in the window will show the progress of the flash programming.  
While programming the service pin LED on the front of the AKC controller will flash.

- 11 REBOOT info:

Can not Enter Command Mode. Please REBOOT the device.  
Can not Enter Command Mode. Please REBOOT the device.

If the following information appears while programming, disconnect the controller's power source and reconnect it. The programme will then "fall in" and continue the programming once the controller sends a ready message. This takes approximately 1½ minute, once the power has been reconnected.

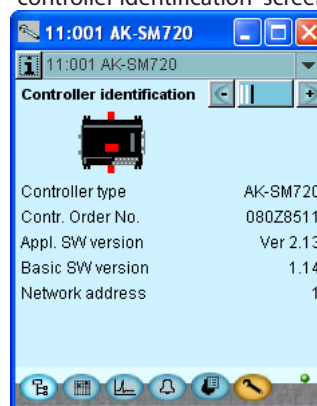
12. End programming:  
When the programming is finished the progress window will show the text:



Press "Close"

13. Controller reboot  
**After 1-2 minutes the controller is ready – wait until the Status LED starts flashing again – now the flash programming has finished.**

14. Check software version of controller  
Close down the flash programming software and start the service tool (remember to use the same COM port for the service tool software, so that you do not need to move the cable). Logon as "SUPV" and passcode "123". Press the left arrow on the temp. overview screen and you will navigate to the "controller identification" screen. Check the software version.



15. Restore  
If you have saved the earlier settings via the Back-up function you can copy the settings back into the controller again. Use the Service tool function "Restore".

